

Leigh Hunt Drive, Southgate, N14 6DA

£1,650 pcm



Full Description

Williamson Dace Brown is pleased to present this two-bedroom ground floor flat in N14. The property comes with one double bedroom and one single bedroom, separate kitchen, living area and bathroom. Further benefits include parking and communal garden. The property is within walking distance to all local amenities and transport links with access to Southgate Underground Station with direct trains to Kings Cross Station. Available Now. * Has the property been flooded in the last 5 years? No * Is there a risk of flooding? No * Is the property listed? No * Is the property in a conservation area? No * Are there any public rights of way across the property? No * Council Tax Band - D * Property Type - Flat * Property Construction - Brick * Parking – Allocated Utilities / Services. Electric Supply - Mains. Gas Supply – No Gas Water Supply - Mains. Sewerage - Mains. Heating sources – Storage heaters Broadband Connected - Yes. Broadband Type – Fibre to the Cabinet Broadband Mobile Signal/Coverage - Likely with EE, Three and Vodaphone Price - £1650 pcm

Contact Us

Williamson Dace Brown

22 Cannon Hill, London

N14 6BY

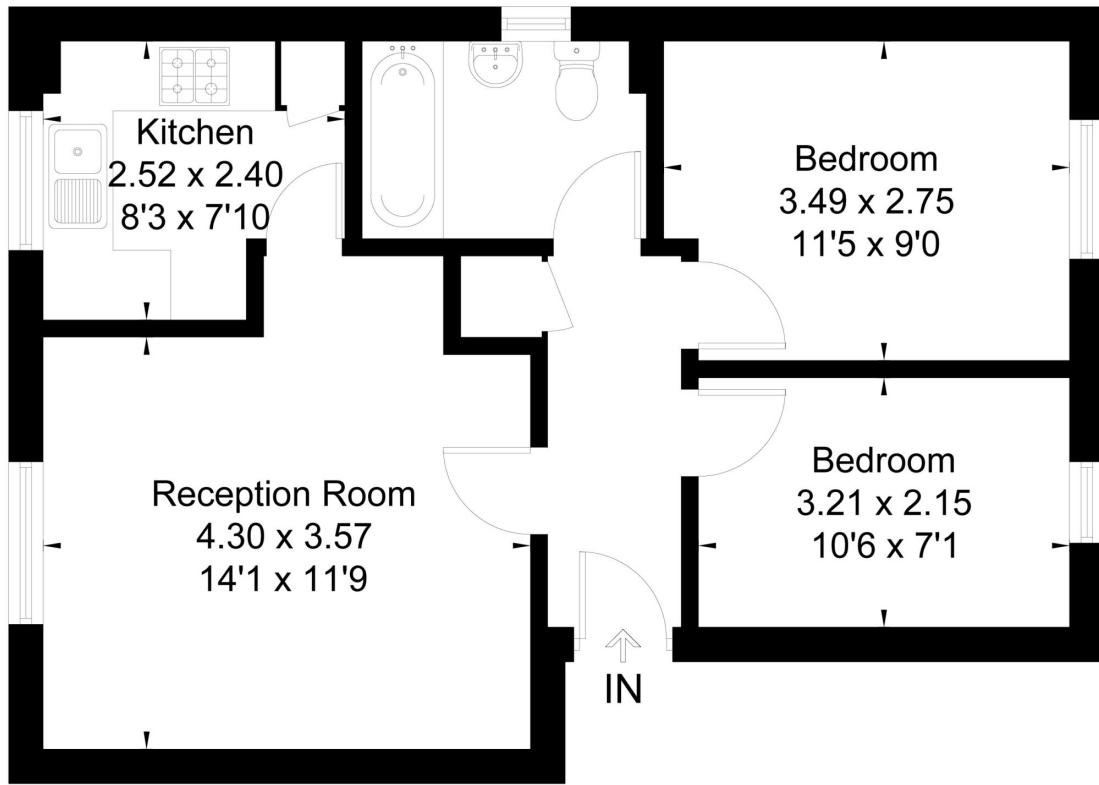
T: 0208 886 4407

E: alex@wdbproperty.co.uk





Approximate Floor Area = 49.2 sq m / 529 sq ft



Ground Floor



This floor plan has been drawn in accordance with RICS Property Measurement 2nd edition.
 All measurements, including the floor area, are approximate and for illustrative purposes only. @fourwalls-group.com #102877