

Medcalf Road, Enfield, Greater London, EN3

£1,850 pcm



Full Description

NEWLY REFURBISHED Williamson Dace Brown is pleased to present this three bedroom house in Enfield, EN3. The property comes with a spacious living area and separate kitchen and bathroom. Two double bedrooms and one single bedroom. Further benefits include Enfield Lock Station within walking distance, with great transport links to Liverpool Station and local shops. Available Now. * Has the property been flooded in the last 5 years? No * Is there a risk of flooding? No * Is the property listed? No * Is the property in a conservation area? No * Are there any public rights of way across the property? No * Council Tax Band - C * Property Type - House * Property Construction - Brick * Parking - On Street Utilities / Services. Electric Supply - Mains. Gas Supply - Mains Water Supply - Mains. Sewerage - Mains. Heating sources - Central heating. Broadband Connected - Yes. Broadband Type - Full Fibre Broadband, Fibre to the Cabinet Broadband and Copper Broadband. Mobile Signal/Coverage - Likely with O2, EE, Vodafone and Three.

Contact Us

Williamson Dace Brown

22 Cannon Hill, London
N14 6BY

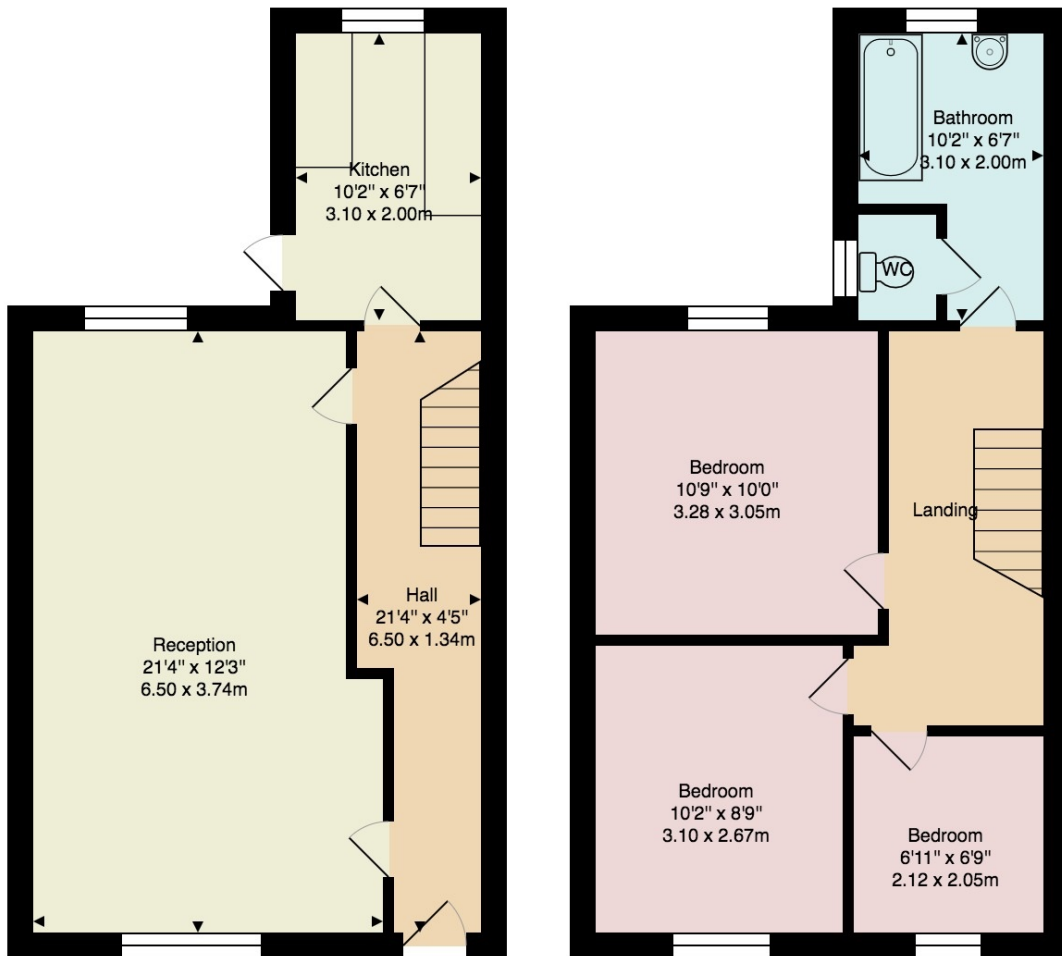
T: 0208 886 4407

E: alex@wdbproperty.co.uk





8 Medcalf Road, EN3



Ground Floor

First Floor

Approx. Gross Internal Area: 816 ft² ... 75.8 m²

All measurements and areas are approximate only.
Dimensions are not to scale. This plan is for guidance only and must not be relied upon as a statement of fact.