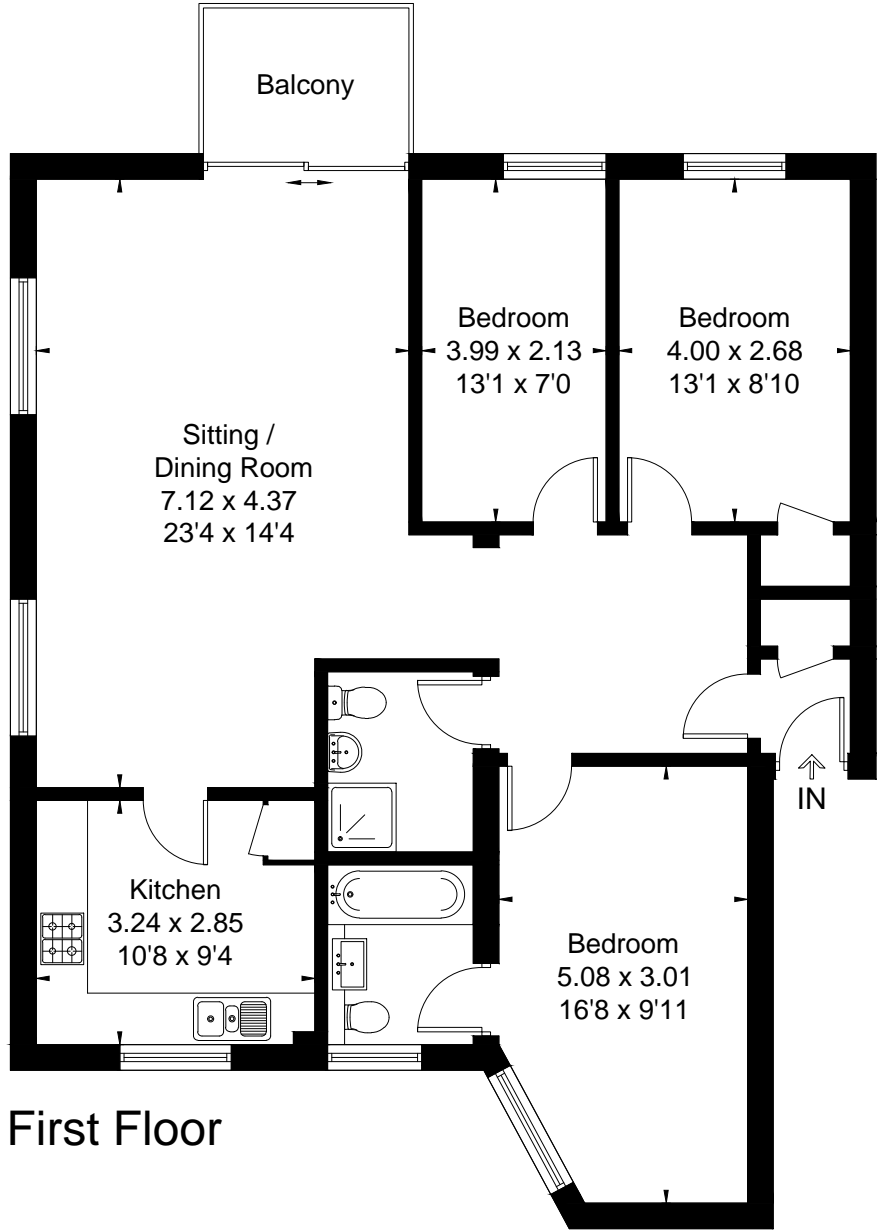
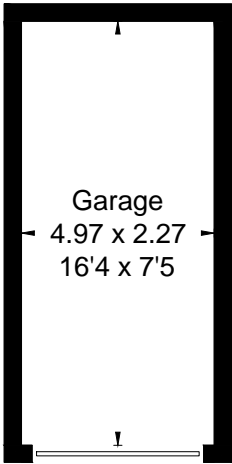


Approximate Floor Area = 96.6 sq m / 1040 sq ft
Garage = 11.1 sq m / 119 sq ft
Total = 107.7 sq m / 1159 sq ft



First Floor



(Not Shown In Actual Location / Orientation)



This floor plan has been drawn in accordance with RICS Property Measurement 2nd edition.
All measurements, including the floor area, are approximate and for illustrative purposes only. @fourwalls-group.com #101692